

EXPANSIVE VIEWS AND GRACIOUS LIVING

216 EVERGREEN DRIVE | KENTFIELD, CALIFORNIA

216Evergreen.com



SCHUMACHER PROPERTIES TEAM

Wise Investing, Inspired Living

Sotheby's

INTERNATIONAL REALTY



216 EVERGREEN DRIVE | KENTFIELD, CALIFORNIA | 94904
MARIN COUNTY | 216Evergreen.com

Nestled among the trees and warmed by the sun resides a grand, graceful contemporary home that has been beautifully renovated. Indoor and outdoor living are a priority, and the sensible floor plan is perfect for entertaining guests and creating endless memories. The materials were meticulously chosen to create a delightful refuge that evokes a feeling of both warmth and sophistication. The impressive views surrounding this lovely home and are enjoyed from all main living areas and bedrooms.



Offered for:
\$5,350,000

6 bedrooms, 6 full baths, 1 half bath
Built in 1988, renovation completed in 2018
Beautiful valley views from every room and terraces
Excellent schools, au pair suite at ground level
Pool, hot tub & sport court
3 car attached garage
Approx 5,475 sq ft* on 4.32 acres



MAIN LEVEL

The expansive main level is designed to impress and entertain with the dining, living spaces and kitchen flowing from one to another effortlessly. Two fireplaces, surrounded by custom craftsmanship and hand-picked matchbook stone, enhance and ignite lingering conversations. The kitchen features custom cabinetry, high-end appliances with an expansive peninsula and counters made of polished Calacatta quartz. The comfortable den is adjacent to the kitchen, along with a beverage cooler and dumb waiter. Outdoor spaces to this main level include a patio for intimate gatherings near the dining room, plus the pool, hot tub and panorama view decks. One full bath with exterior access to the pool and a powder room ideal for guests complete this level.

SECOND LEVEL

The second level offers four bedrooms, each with direct access to well-appointed ensuite baths with custom finishes. The master bedroom, adorned with high ceilings, view deck, walk-in closet and fireplace, ensuite a marble-tiled bath with large windows/ skylight, gorgeous walk-in shower and soaking tub. The laundry room is conveniently located on this level along with abundant storage.





GROUND LEVEL

The ground level lends itself to endless possibilities. The two bedrooms and two baths, with direct access to the sport court/ deck and lawn area could be utilized as a playroom/ bonus room, home office or exercise room. There are five large closets, a utility room, with second laundry capability, and direct access to the garage.



GROUNDS

The grounds and views are even more breathtaking on the outside than they are on the inside. The view decks, facing northwest, provide widespread views of the valley with expansive sky to enjoy the stars at night. The location of the patios, yard and pool naturally lend themselves to hosting poolside entertainment, barbecues and large gatherings. With approximately 4.32 acres of peace and tranquility, this home is an ideal oasis from the hectic pace of everyday life.



LOCATION

This remarkable home is located in the highly desired Association of Kent Woodlands and within the acclaimed Kentfield School District. Less than 10 minutes to the nationally recognized, award winning schools: Bacich Elementary, Kent Middle School and Redwood High School. Shopping, restaurants, freeways and amenities are just a short distance away as are parks, hiking, biking and water recreation.

REMARKS

- Square footage is per floor plan technician; Seller and Broker do not warrant; buyer is advised to investigate.

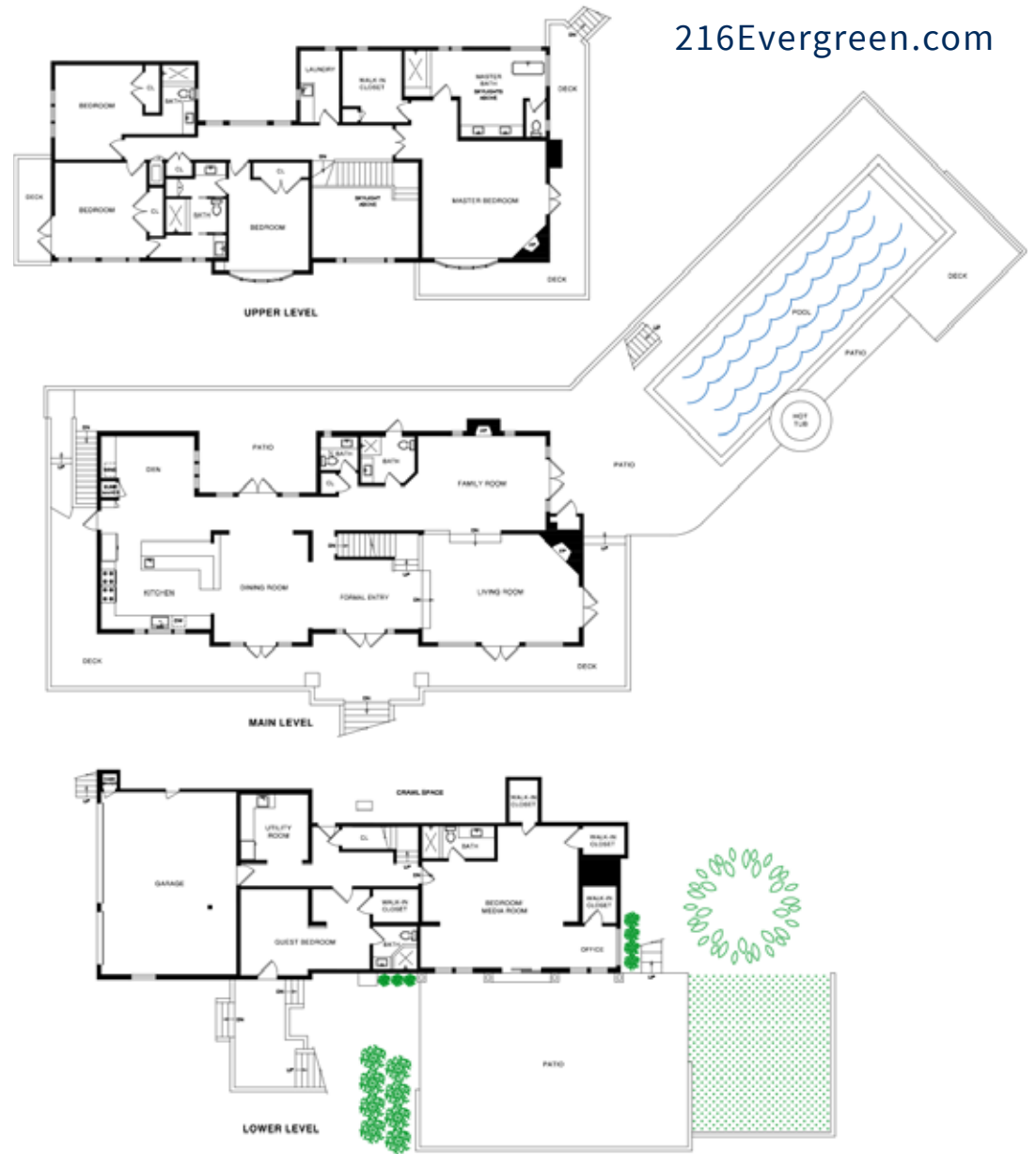




Karen Diemoz
DRE #01979852
Showing Agent, Realtor®
Direct: 415.770.8100
karen.diemoz@sothebyshomes.com



REBECCA SCHUMACHER
DRE #01756452
Listing Agent, Realtor®
Direct: 415.928.3800
rebecca.schumacher@sothebyshomes.com



schumacherproperties.com

Wall Street Journal/REAL Trends 2017 Top 250 Luxury
Real Estate Professionals in US by Sales Volume

Sotheby's
INTERNATIONAL REALTY

117 Greenwich Street
San Francisco, CA 94111

Wall Street Journal/REAL Trends 2017 Top 250 Luxury Real Estate Professionals in US by Sales Volume
Operated by Sotheby's International Realty, Inc. If your property is listed with a real estate broker, please disregard. It is not our intention to solicit the offerings of other real estate brokers. Sotheby's International Realty does not guarantee the accuracy of square footage or other information.