

THE
PACIFIC
 PACIFIC HEIGHTS

110

TOWNHOME

3 BED / 4 BATH

LIVING / 2,680

APPROXIMATE SQUARE FOOTAGE

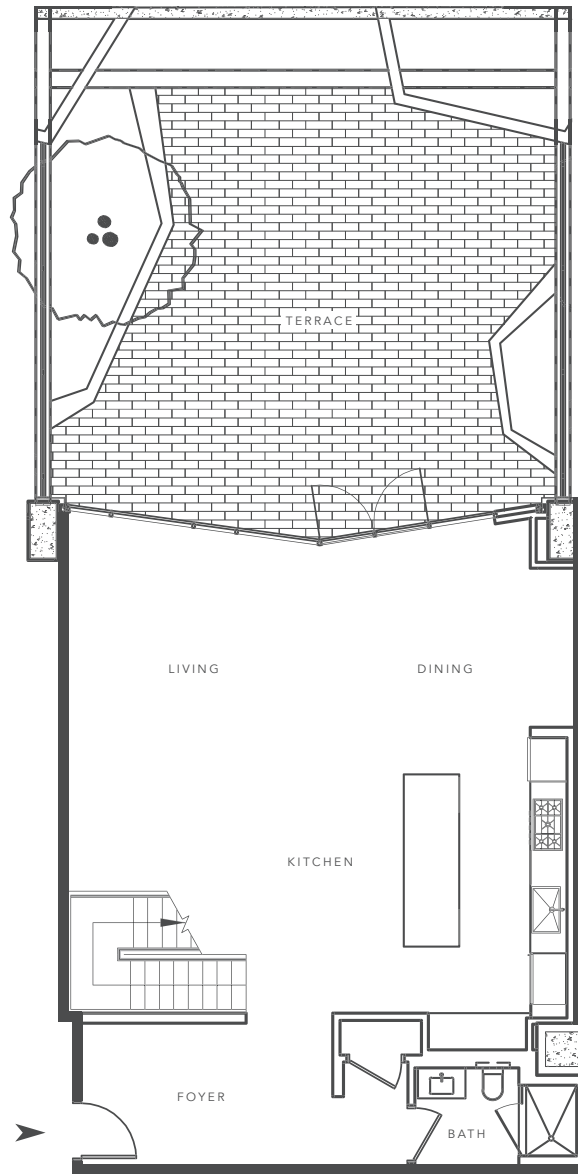
TERRACE / 845

APPROXIMATE SQUARE FOOTAGE

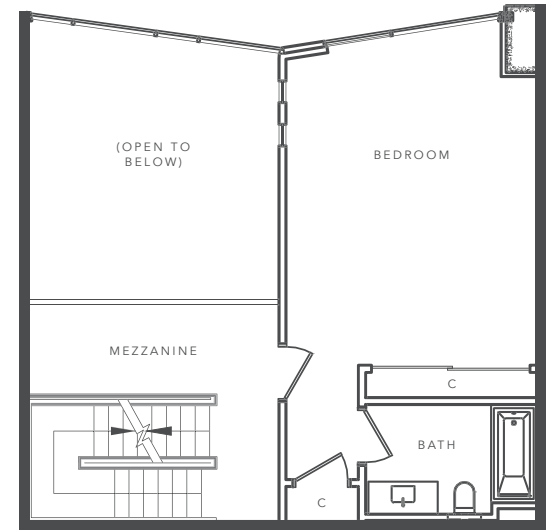


2121 WEBSTER STREET
 SAN FRANCISCO, CALIFORNIA 94115

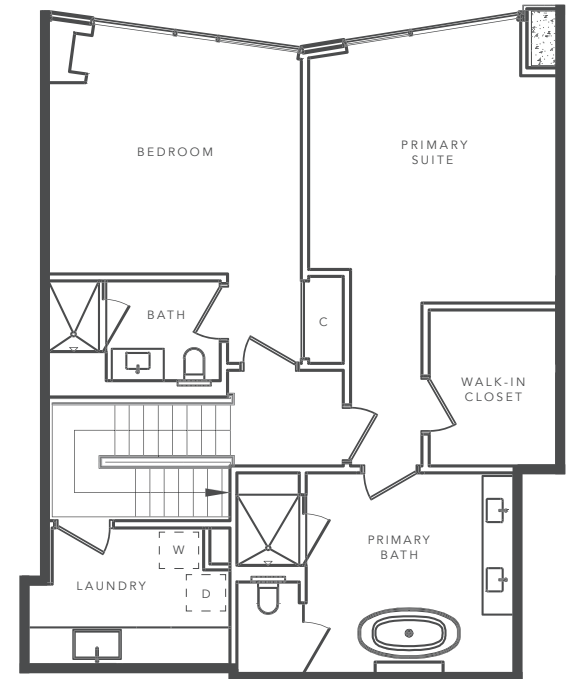
THEPACIFICHEIGHTS.COM
 415 928 2121



FIRST FLOOR



SECOND FLOOR



THIRD FLOOR



Plan not to scale. Trumark Urban and The Pacific reserve the right to make modifications in plans, exterior designs, prices, materials, specifications, finishes and standard features at any time without notice. Photographs, renderings and landscaping are illustrative and conceptual. All artist's renderings are for representational purposes only and subject to variances. Windows and floor plans vary per residence, elevation and type. Square footage is approximate and should not be relied upon as a representation, express or implied. All rights reserved. Real estate consulting, sales and marketing by Polaris Pacific. A licensed California, Arizona, Colorado, Oregon and Washington broker—CA BRE #01499250. ©2016 The Pacific. Brokers must accompany their client(s) and register them on their first appointment in order to be eligible for a broker commission.