

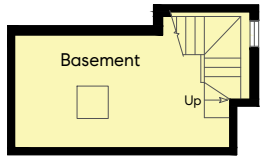
3447 Clay Street

San Francisco, CA

Livable 4,750 Sq Ft

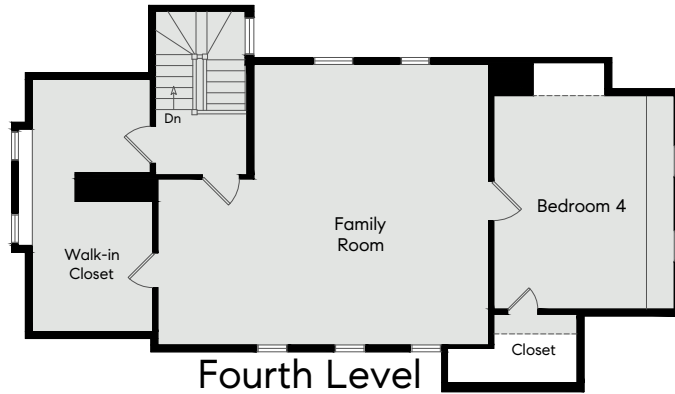
Garage 530 Sq Ft

Non-Livable 685 Sq Ft



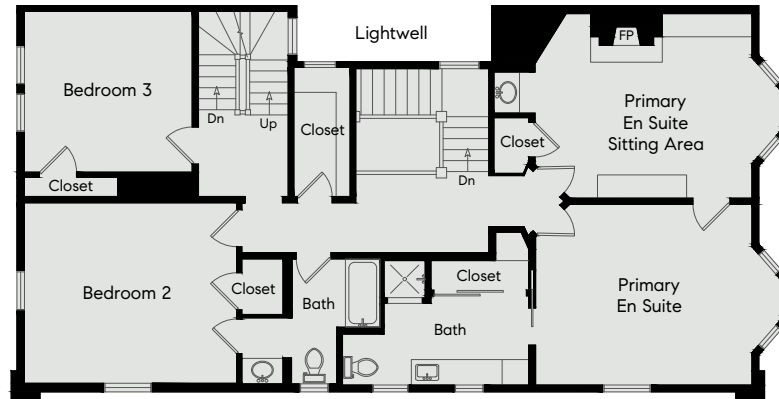
Lower Level

140 Sq Ft



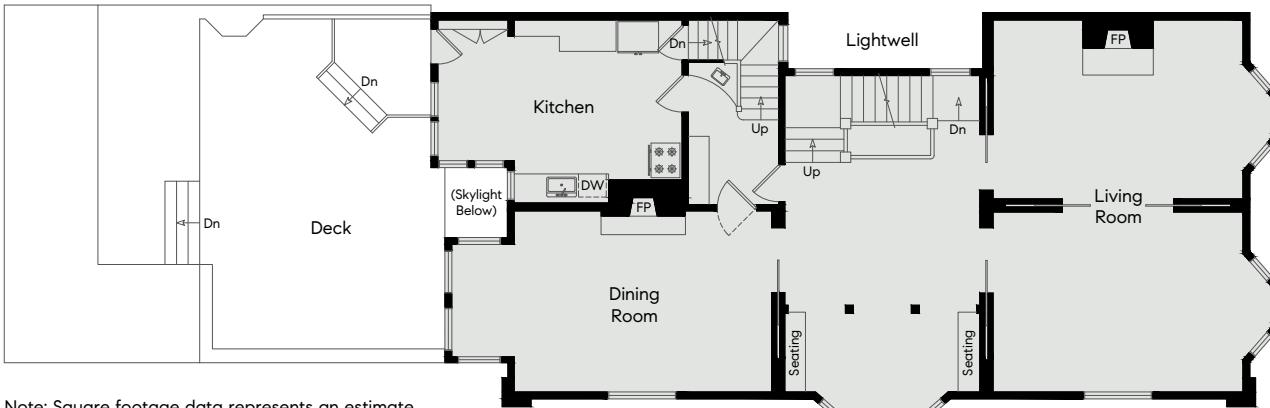
Fourth Level

910 Sq Ft



Third Level

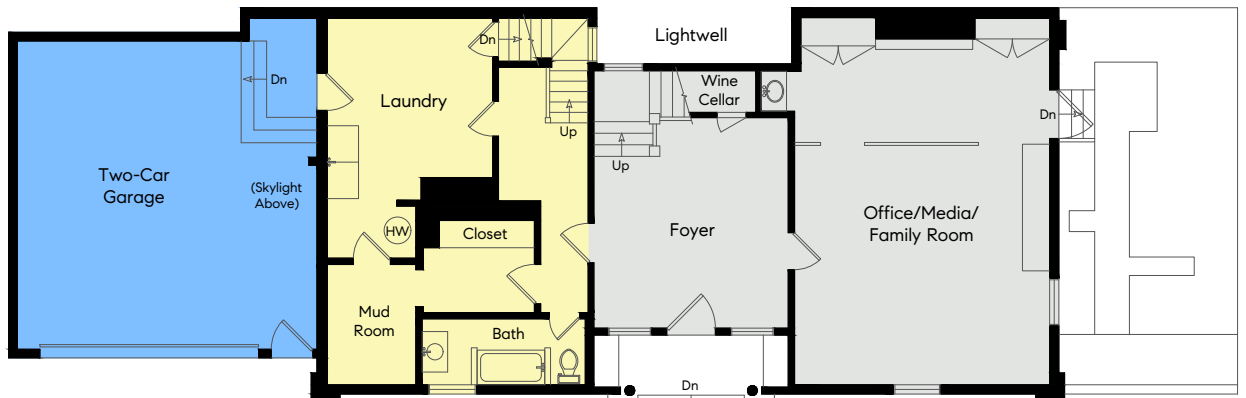
1,450 Sq Ft



Second Level

1,570 Sq Ft

Note: Square footage data represents an estimate and has been derived simply for the marketing-style floor plans developed by Open House Drafting.



First Level

820 Sq Ft

545 Sq Ft

530 Sq Ft